



FIELD SERVICE BULLETIN #008

Problem: Excessive wear (metallic powder/metal particles) due to the cam followers of the latching operation coming in contact with the top front frame during opening and closing of the upper chassis.

Solution: Check and re-adjust the cam followers.

Where Used: All plotters/imagesetters

Procedure:

- ∑ Locate problem area and look for signs of excessive wear. (See Fig. 1)
- ∑ If re-adjustment is needed, remove both end covers.
- ∑ Measure from the front edge of the chassis frame to the front of the cam follower. (See Fig. 2) The location of the cam follower from the factory is all the way towards front of plotter, approximately 7/16".
- ∑ Loosen the cam follower using a 3/8 nut driver on the hardware located on the outside of the chassis frame, (See Fig. 3) and a screwdriver holding the body of the cam follower.
- ∑ Relocate the cam follower 1/16" towards the rear of the plotter and tighten hardware.
- ∑ When the cam follower is in the correct position, the front edge of the latch will be approximately parallel with the front edge of the chassis frame and the latch knob approximately 1/16"-1/8" away from the knife stiffener. (See Fig. 4 and 5)

See illustrations on the next page.

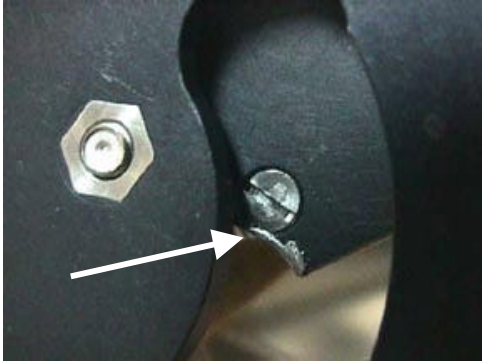


Fig. 1

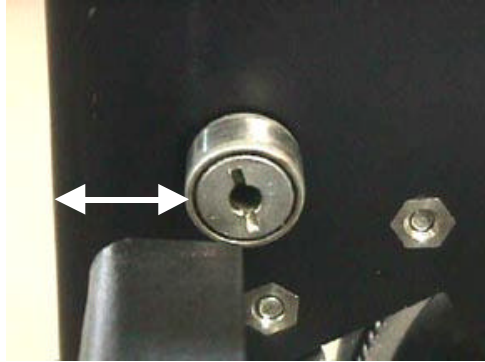


Fig. 2

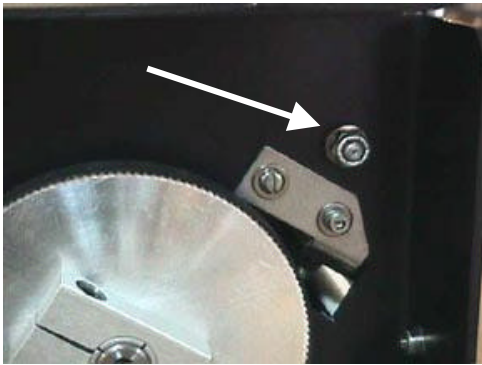


Fig. 3

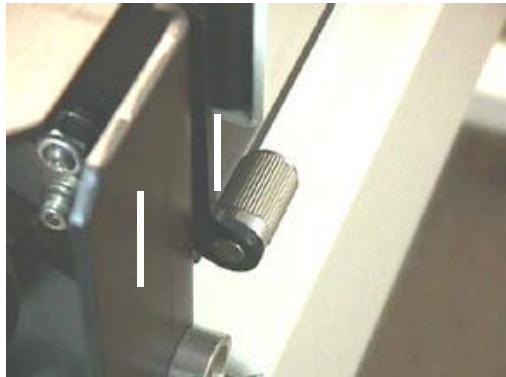


Fig. 4

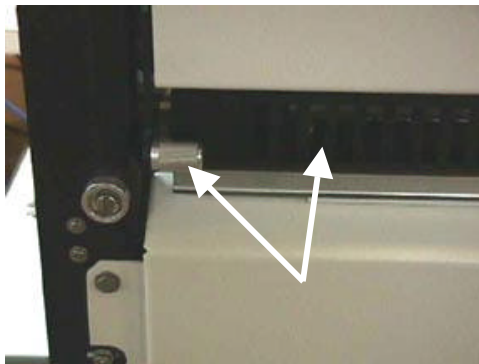


Fig. 5